



WELLNESS  
WATER

W DIRECT  
WATER PURIFIER  
BF-DN01

Product Manual

[www.w-water.co.kr](http://www.w-water.co.kr)

## W Direct water purifier Feature



115mm

### Compact & Slim design

Can be harmonized with any place by Luxury & Slim design



Easy

### Easy filter replacement system

Everyone can replace filters by easy & quick filter replacement system



### Optimum filter solution

High quality filter system with best performance



Cock

### Exchangeable tap

Sanitary parts by self-wash of changeable tap



### No electricity & No noise

No worry about electric charge and noise

# CONTENTS

## Before use

---

Safety Warning	04
Safety Caution	06
Parts name   Parts list	07

## When usage

---

Water flow diagram	08
Check points before installation	09
Installation	10
Check point before use   How to use	11
How to Clean the tap	12
Filter Replacement	13
Check before reporting the failure	14

## What to know

---

Product standard	15
------------------	----

## Safety Warning

This sign is to call a Caution about things and manipulations that may cause danger. Read carefully and follow the directions to avoid danger.



This sign is warning and preventing for expected accident and danger. Please check carefully and follow the directions.



If not followed correctly, the user may be dead or sustain a serious injury.

**Warning**



If not followed correctly, the user may sustain an injury or may lose properties.

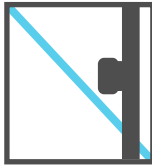
**Caution**



**Warning**

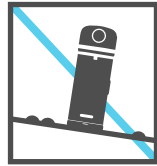
Do not install close to place where combustible gas can leak or electric heating instrument.

Gas may leak around the water purifier and explosion or fire may occur.



Do not install on uneven or inclined floor and do not put on sitting cushion, carpet, pallet and floor pad.

It can be not only cause of damage and noise, but also injured user.



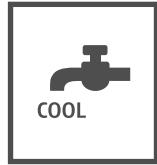
Use only tap water for inlet. Do not use ground water, rain water, river, and sea water.

It can be cause of shorten product life and breakdown.



Use cold water tap.

It can be cause of water filter and product damage with hot water connection.



Install in clean area.

For preventing water pollution.

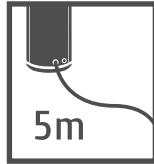


Do not install or put on the area with below zero temperatures.

It can be cause of product damage by ice formation inside of product.



Do make water hose between tap water and inlet of product NO more than 5m,



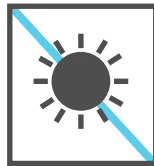
It can be cause of low product performance.

Do not pull out hose during, when you move product to other place,



It can be cause of product damage and water leak,

Avoid place with high temperature and direct sunlight area for when install,



It can be cause of product discoloration,

Clean the product periodically,



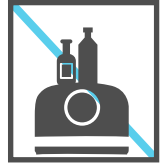
For preventing product damage and noise

Do not place electric heating instrument, electric heater and inflammable substance near the product,



It can be exploded or fired,

Do not put metalloïd, chemical and water bottle on the product,



It can be cause of product damage,

Do not let water get inside of the water purifier,



It can be cause of product damage,

Do not disassemble and modify the product except designated engineer,

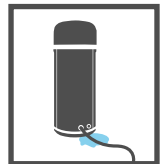


If you meet product problems, please contact your local agent.

If water is stagnant or it leaks from the inside of the product, close the raw water supply valve and contact to customer service 02-3448-8980



Check water leak at the tube and connecting area of in & outlet,



It can be cause of poverty damage by water leak,

Do not let children touch the lever often,

It can be cause of product damage and water leak,

## Safety Caution



### Caution

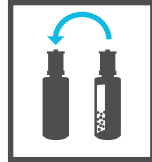
Make door keep closing during product using.

Foreign substance and insect can be inside of product body and it can be cause of breakdown.



Replace filters regularly according to the replacement period.

If do not change the filter in time, it can be cause of bad water smell from outlet and filter performance degradation. Please refer P 13 for filter replacement.

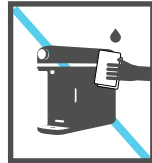


Flush the filter cartridge (Make water purifier run) more than 5 minutes after long time no use.



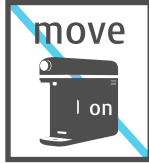
When clean the product, do not use benzene, thinner, alcohol and other chemical substance.

Product exterior can be damaged.



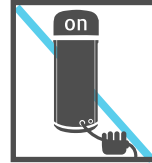
Do not move the product when water purifier is running.

It can be cause of product damage or water leak by hose disconnection.



Do not remove hose when water purifier is running.

It can be cause of product damage or water leak by hose disconnection.



Must use genuine filter of Bodyfriend.

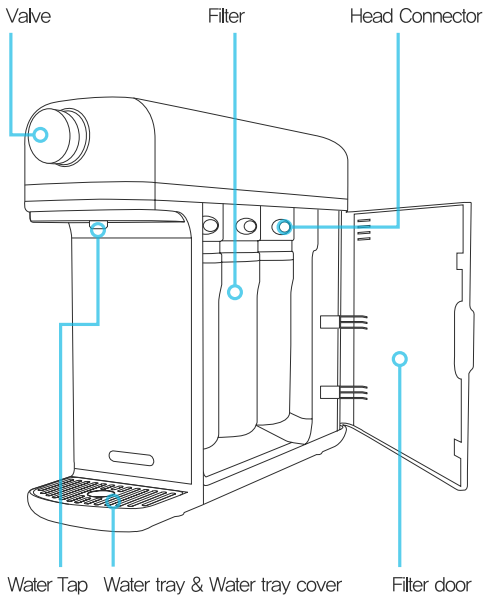
If the filter from other company or nonstandard product is used, it may cause breakdown, bad smell, changed water taste, water leak and not purify well.

Do not use purified water for fish in aquarium.

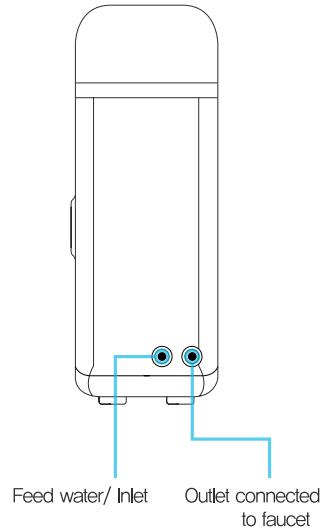
Purified water can be NOT suitable for fish and can be died.

## Parts name | Parts list

### Front



### Back



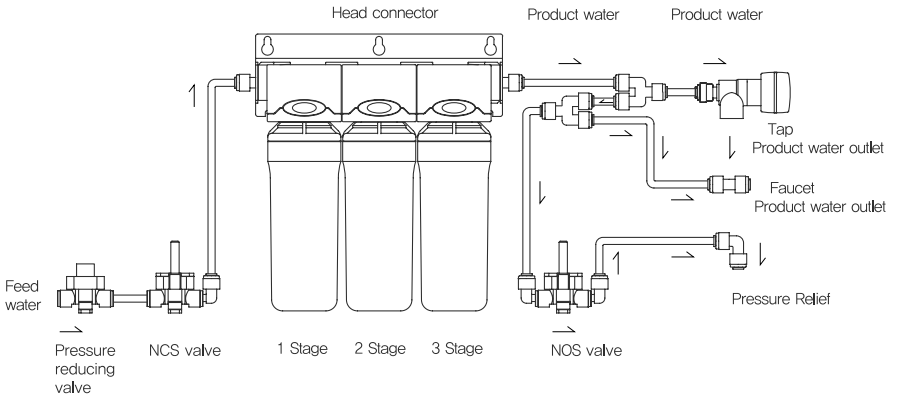
### Parts list

PRODUCT MANUAL

## Water flow diagram

### Water flow diagram

---



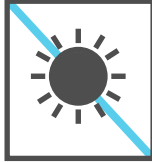


## Check points before installation

### Installation place

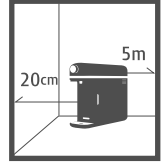
Avoid place with high temperature and direct sunlight area when install.

It can be cause of product discoloration.



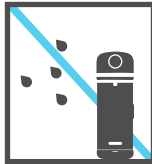
The back and sides of the product need more than 20cm spaces apart from the wall for convenience of filter replacement.

And do make distance between tap water and inlet of product NO more than 5m to connect water hose.



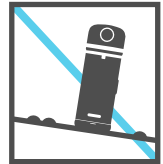
Avoid place with moist, dust and may splashed water directly to water purifier.

It can be cause of breakdown.



Do not install on uneven or inclined floor.

It can be cause of breakdown.



Do not install or put on the area with below zero temperatures.

It can be cause of product damage by ice formation inside of product.



Install in clean area.

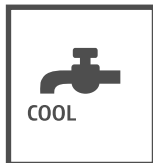
For preventing water pollution.



### Tubing connection

Use cold water tap.

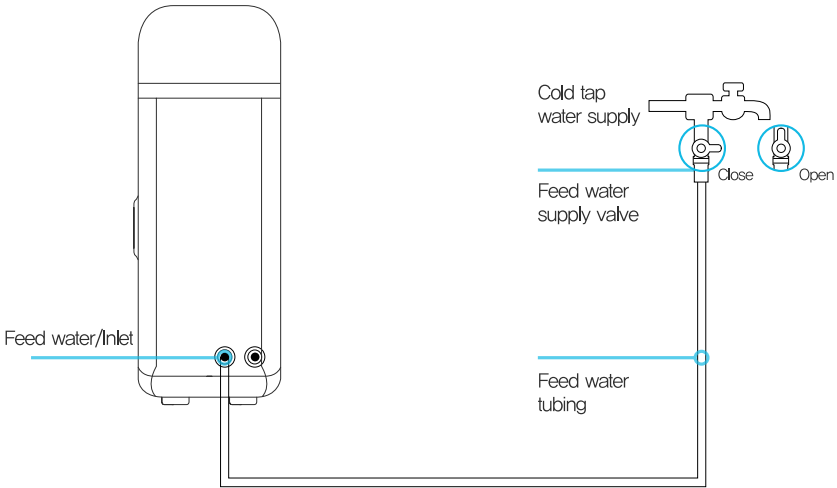
It can be cause of water filter and product damage with hot water connection



## Installation

### Water flow diagram

---



### Water Purification System

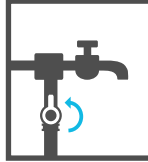
- 01 Install Tap water valve at cold tap water supply.  
valve should be closed when install.  
It can be cause of water filter and product damage with hot water connection
- 02 Connect hose from Tap water valve to Inlet of water purifier.
- 03 Open the Tap water valve.
- 04 Close the filter door.
- 05 After the installation, make sure the hose's joint and Tap water valve do not leak.

※ Use only tap water. Do not use underground water or others.

## Check points before use

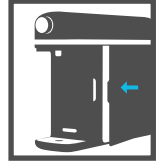
Open the Tap water valve before using,

Check tap water still running first and then open the Tap water valve.



Check the door keep closing,

If the door open, the water do not pass into the water purifier.



Flush the filter cartridge (make water purifier run) more than 5 minutes after long time no use,



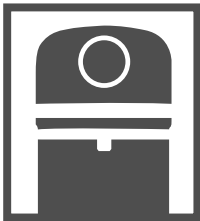
Drain the water inside of water tray periodically,



Caution : If want to do not use water purifier for long time, close the tap water valve.

## How to use

### Way of water purifying

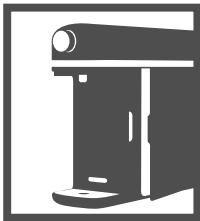


Open : Turn Water lever to clockwise.



Close : Turn Water lever to counterclockwise.

### Filter door



When the door is open, the feed water is automatically closed and it releases internal pressure.

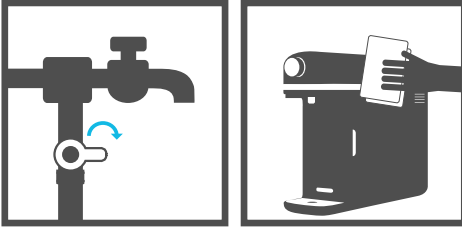
It is for convenience to replace filter and easy & sanitary filter replacement by auto residual pressure out.

CATION : Frequent Open/Close of the door will cause the overflow in tray.

## How to clean the tap

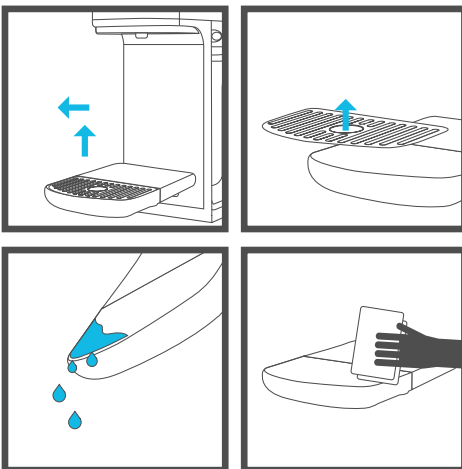
### How to Clean

- Step 1 : Close the Feed water valve.
- Step 2 : Use neutral detergent to clean the body.
- Step 3 : Use a soft and dry cloth to clean lastly.



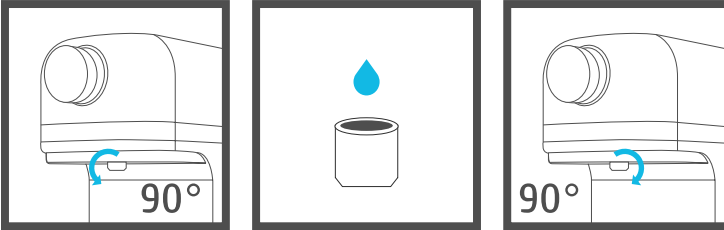
### How to clean water tray.

- Step 1 : pull out the tray and disassemble.
- Step 2 : Pull out tray cover and disassemble.
- Step 3 : Throw away water and clean the tray by soft cloth.
- Step 4 : Assemble the tray and tray cover by opposite way of above.



## How to clean the tap

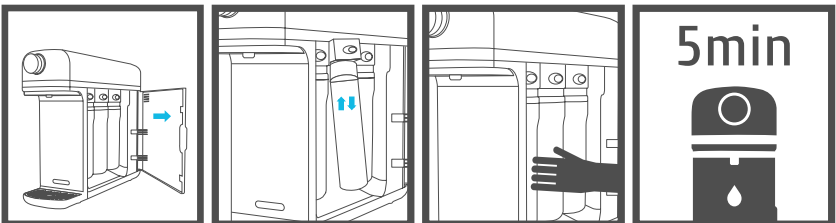
- Step 1 : Turn Water tap by turning it clockwise,  
 Step 2 : Clean up the tap.,  
 Step 3 : Put it back by turning it counterclockwise.



## Filter Replacement

### Filter replacement

- Step 1 : Open the filter door,  
 When door open, it will automatically shutoff water flow
- Step 2 : Lift up and pull out the filter to disassemble,  
 When disassemble filter, some water can be out from filter. It is not water leak.
- Step 3 : Put and push new filter to head connector way until ‘Click’ sound to assemble.
- Step 4 : Close filter door.  
 The water cannot flow when the door is open.
- Step 5 : Make water purifier keep running for 5 min to stabilize new filter.  
 Black-colored water may come out due to activated carbon powder or initial activated-carbon.  
 Cloudy water may come out due to water bubble. So need stabilization of new filter by 5 min running



## Check before reporting the failure

Even if do not follow the warning and caution, It may not breakdown, So if you find problem, follow check list as below then contact to us, if they still have same problem,

Symptom	Check– up	Solution
The taste of water is strange.	<ul style="list-style-type: none"> <li>– Is the water– purifier used for too long time?</li> <li>– Is not it the time for changing filter?</li> </ul>	<ul style="list-style-type: none"> <li>– Make water purifier keep running for 10 min.</li> <li>– Replace to new filter. (Use standard filter)</li> </ul>
Water is not coming.	<ul style="list-style-type: none"> <li>– Is tap water supply is well?</li> </ul>	<ul style="list-style-type: none"> <li>– Open Tap water valve.</li> <li>– Check the hose is not folded.</li> <li>– Check the tap water still comes out.</li> </ul>
The amount of filtered water reduced suddenly	<ul style="list-style-type: none"> <li>– Is not it the time for changing filter?</li> <li>– Is the Tap water valve closed?</li> </ul>	<ul style="list-style-type: none"> <li>– Replace to new filter. (Use standard filter)</li> <li>– Open the Tap water valve.</li> </ul>
Water Purifier has big strange sound. (Noise)	<ul style="list-style-type: none"> <li>– The floor under water purifier is flat? Water purifier has touched with any other things?</li> <li>– It has noisy sound after water come out from cock?</li> </ul>	<p>Install water purifier on flatted floor, Do not make any other things are touched with water purifier. This water purifier is tankless model. So when water is used, the water comes through the water purifier from the tap instantly and it can make some sound. (It is normal)</p>
There are some substances inside of purified water.	<ul style="list-style-type: none"> <li>Is not it the time for changing filter?</li> </ul>	<p>Replace to new filter. (Use standard filter)</p>
There is water leak.	<ul style="list-style-type: none"> <li>The place where the water purifier installed is moist?</li> </ul>	<p>There may have condensation between cold area inside of water purifier and outside humidity. It is normal.</p>

## Product standard

Product name	<b>W DIRECT WATER PURIFIER</b>
Manufacturer	<b>BODYFRIEND</b> / South Korea
Installation place	House / Office
Weight	4kg
Size	W115 × D434 × H320mm
Working pressure	0,7~7kg /cm <sup>2</sup> (0,7~0,69 MPa)
Temperature	40~100°F

※ Standards (exterior, Design, etc.) may be changed without an advanced notice for the product' s performance improvement.



WELLNESS  
WATER