

C650

OKI



The World's smallest high-performance A4 colour printer

- | | |
|---|---|
| A4 colour printer | ✓ |
| Duplex print | ✓ |
| Prints B8 to 216 x 1321mm, up to 256gsm | ✓ |
| 1 – 20+ users | ✓ |



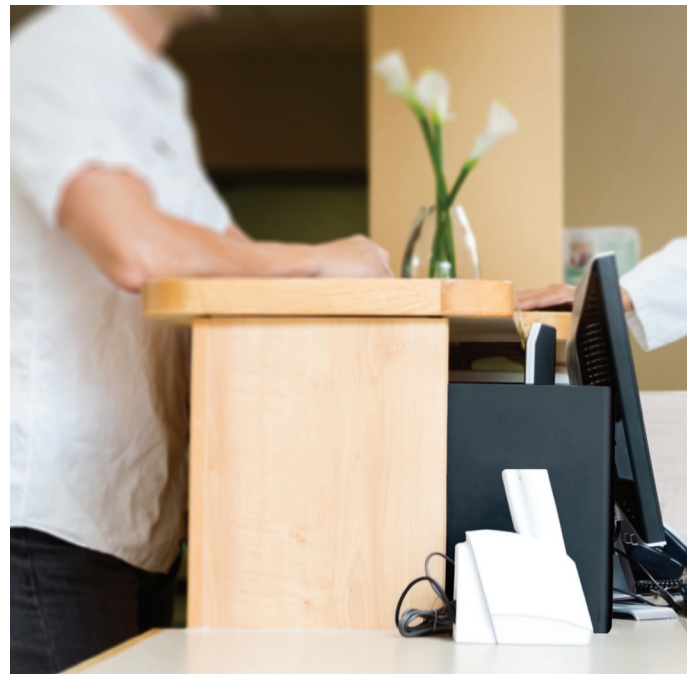
The compact colour printer, with massive performance

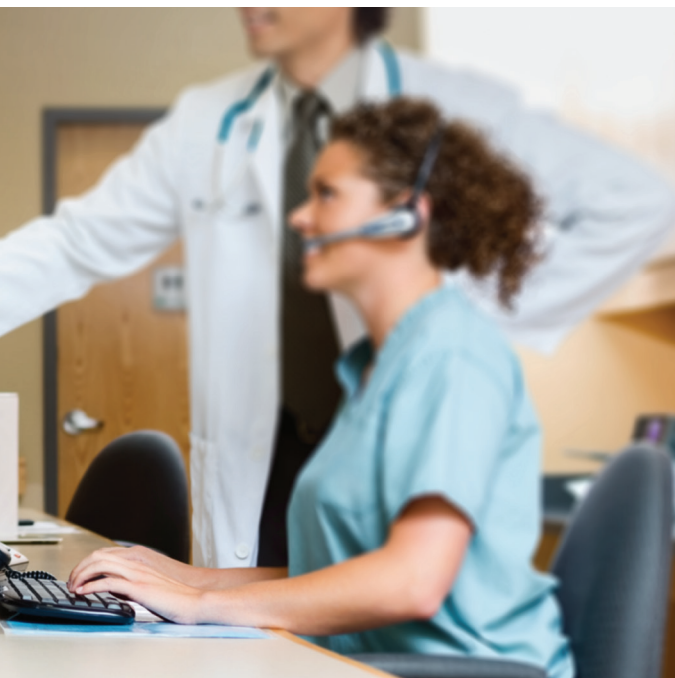
Meet the small colour printer that doesn't compromise on cost effectiveness, productivity or efficiency.

For organisations where space is at a premium, buying a compact printer traditionally meant compromising on quality, productivity or running costs.

Not anymore. The C650 from OKI, delivers the performance, media handling and cost-efficiency of a workgroup device, in the format of an A4 colour desktop printer.

Make short work of everything from marketing collateral to customer invoices with high-speed printing in rich LED colour. Full front access means the device is not only tiny but also fits into the tightest of spaces with no requirement to open any side of the device except the front throughout the life of the printer. Durable components ensure reliability long into the future. And, with running costs designed for heavy use, the C650 makes high-volume, high-quality colour printing inexpensive and efficient.





Who is the C650 for?

The C650 thrives anywhere space is tight and performance is a priority. Whether you need a durable device that can survive the rough and tumble of the warehouse floor, or to slot neatly into an enclosed space in a kiosk or on a production line, while being equally at home in the back office where demanding users require high print volumes and excellent quality, the C650 provides the flexibility to adapt to the specific needs of your business.

Why the C650?

- **Extremely compact** – Designed to work in the tightest of spaces, the C650's small frame requires a minimal space to operate. With full front access and only 2cm required on the sides to function and for maintenance, the C650 can be placed almost anywhere.
- **Superior print speed** – Despite the minimal size, and minimal maintenance space required, the C650 outperforms in both print speed and media handling, printing up to 35 pages a minute, while also printing with ease on media up to 256gsm or up to 1.32m long.
- **Reliable** – Thanks to its new unique design making much more use of metal in place of plastic, the C650 is the most robust device its class. Designed for a long, durable life, it simply gets on with its job.
- **Exceptional print quality** – Create documents and marketing collateral in stunning colour with LED technology, quickly and easily without compromise.
- **Unrivalled ROI** – The C650 is designed to print, and print, and print. Its very long life and high duty cycle are supported with separate toners and drums to ensure the maximum usage of all consumables – perfect for high volume, high coverage colour printing. All consumables are user changeable with no hidden surprises. The C650 just gets on with its job, enabling you to get on with yours.



PRINTER	
A4 Print speed	35ppm colour/mono
Time to first print	6.5 seconds colour/mono
Warm up time	≤ 20 seconds from power on ≤ 11 seconds from power save
INTERFACE AND SOFTWARE	
Connectivity	Standard: 10/100/1000 Base Ethernet, USB 2.0 Device, USB 2.0 Host x 1, NFC ⁴ Optional: Wireless 802.11abgn
Printer languages	PCL 6 (XL3.0) emulation, PCL 5c emulation, Epson FX Emulation, PostScript 3 emulation, PDF 2.0 emulation, IBM ProPrinter emulation
Network & protocols	All major network protocols supported via ethernet card with internal web server for printer and network card set-up and management. TCP/IPv4&v6, NetBIOS over TCP, DHCP, DHCPv6, HTTP, HTTPS, DNS, DDNS, WINS, Bonjour, SMTP, SMTPS, POP3, SNMPv1&v3, SNTp, IPP, IPPS, WSD Print, LLTD, IEEE802.1X, LPR, Port9100, Telnet, FTP, FTPS, AirPrint, Wireless IEEE802.11a/b/g/n, WEP, WPA, WPA2, Personal, Enterprise ²
OS Compatibility¹	Windows 10, Windows 10 x64, Windows 8.1, Windows 8.1 x64, Windows 8, Windows 8 x64, Windows 7, Windows 7 x64, Windows Server 2019, Windows Server 2016, Windows Server 2012 R2, Windows Server 2012, Windows Server 2008 R2, Windows Server 2008, Windows Server 2008 x64, macOS X 10.15, macOS X 10.14, macOS X 10.13, macOS X 10.12, macOS X 10.11, iOS, Linux, Android
Advanced networking & security	IPv6, 802.1x authentication, SNMP V3, SSL3/TLS HTTPS encryption, Secure Print, Secure Erase, Data Encryption, IP filtering, IPSec, MAC Filtering
Utility suite¹	Print Job Accounting Client, Firmware Update Tool, PS Gamma Adjuster, Color Correct, SENDYS Explorer ³ ; Windows: Template Manager, OKI LPR, Color Swatch Utility, Driver Installer Generator, smart PrintSuperVision, Configuration Tool, Network Extension, Monitoring Tool, The Design Hub; MacOSX: Network Card Setup, Profile Assistant; Android/iOS: Mobile Print; Android: NFC Setting Tool; iOS: Firmware Update Tool
TYPEFACES	
Printer fonts	PCL emulation 87 scalable fonts, PostScript emulation 80 fonts, LinePrinter, OCR-A/B, USPS ZIP Barcode
Barcode	10 types of one dimension with 26 variations: UPC-A, UPC-E, EAN/JAN-8, EAN/JAN-13, Interleaved2of5, Code39, Code 128, EAN/UCC-128, CODABAR, ZIP+4 POSTNET, 2 types of two dimensions: PDF417, QR code(Model2)
PRINT QUALITY	
Resolution	1200 x 1200 dpi
Enhancements	Auto Color Balance, Photo Enhance via Driver (Windows PCL6 driver only)

¹ Check local OKI website for latest driver releases and OS compatibility

² Only available with Wireless Network W-LAN

³ For more information visit www.sendysexplorer.com

⁴ Android device only, print through OKI Mobile Print App



3 Year Warranty

Our devices are manufactured to the highest standards of quality and technology, which has been confirmed by independent tests. We are so convinced of the high quality of our products that we are offering you an extension of the standard warranty period to 3 years at no extra cost to you. Simply register your product within 30 days of purchase. For further information please visit: WWW.OKIEUROPE.COM/WARRANTY

PAPER HANDLING	
Paper capacity	Tray 1: 250 sheets of 80gsm; Multi-purpose tray: 100 sheets of 80gsm
Paper capacity optional trays	Tray 2: 530 sheets of 80gsm; Tray 3: 530 sheets of 80gsm; Tray 4: 530 sheets of 80gsm
Maximum paper capacity	1,940 sheets of 80gsm
Paper sizes	Tray 1: A4, A5, A6, B5; B6 Tray 2/3/4: A4, A5, A6, B5, B6; Multi-purpose tray: A4, A5, A6, B5, B6, B7, B8; Envelopes (Com-9, Com-10, DL, C5), Custom size: Width 55-216mm Length 91-1,321mm; Duplex: A4, A5, A6, B5, B6; Custom size: Width 105-216mm Length 148-356mm
Paper weight	Tray 1: 60 to 256gsm; Tray 2/3/4: 64 to 176gsm; Multi-purpose tray: 60 to 256gsm; Duplex: 64 to 176gsm
Duplex	Standard
Paper output	150 sheets face down, 100 sheets face up, 80gsm
GENERAL FEATURES	
Memory	1GB RAM; 3GB eMMC
Processor	ARM® Cortex®-A9
Environment	Operating temperature/humidity: 10°C to 32°C (17°C to 27°C recommended) / 20% to 80% RH (50% to 70% RH recommended) Storage temperature/humidity: -10°C to 43°C, 10% to 90% RH
Power supply	Single phase 220–240VAC, frequency 50/60Hz +/- 2%
Power consumption	Typical: 840W; Max: 1150W; Idle: 20W; Power Save: <14W; Deep Sleep: <1.1W; Auto-Off: <0.15W
Noise level	Operating: 54dB(A) or less; Standby: 32dB(A) or less; Power save: Inaudible
Dimensions (HxWxD)	290 x 395 x 430mm
Operating space required (HxWxD)	490 x 435 x 654mm
Weight	28.2kg (including all consumables)
Duty cycle	Maximum: 100,000 pages/month; Average: 8,000 pages/month
Warranty	3 years extended warranty upon registration within 30 days of purchase
Product order numbers	C650dn-Euro 09006144; C650dn-2AC 09006143

ACCESSORIES (ORDER NUMBERS)

Option Tray 09006124; Cabinet 09006141; Caster Base 09006140; Wireless LAN 45830222

CONSUMABLES (ORDER NUMBERS)

Toner cartridges* (6,000 pages)	Cyan: 09006127; Magenta: 09006128; Yellow: 09006129
Toner cartridge* (7,000 pages)	Black: 09006130
Image drum** (50,000 pages)	Cyan: 09006132; Magenta: 09006133; Yellow: 09006134; Black: 09006131
Transfer Belt (60,000 pages)	09006125
Fuser Unit (60,000 pages) ***	09006126

* Toners: A4 pages yield compliant with ISO/ISC 19798

** Drum: Average number of A4 pages printed (3 pages per job)

*** Fuser: 3 pages per job

Printer shipped with toner for approx. 3,000 A4 pages

EMEA HEAD OFFICE

OKI EUROPE LTD

Blays House, Wick Road
Egham, TW20 0HJ
United Kingdom
T +44(0) 20 8219 2190
WWW.OKI.COM/EU

OKI

Open up your dreams